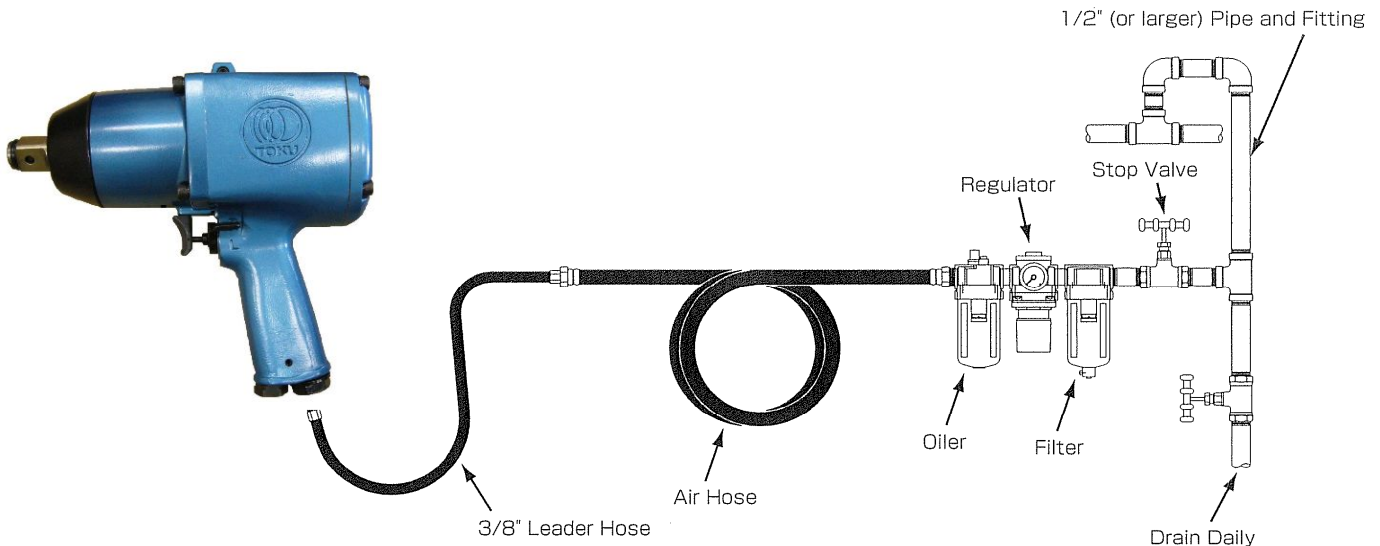


AIR HOSE AND HOSE CONNECTION:



OPERATING INSTRUCTIONS

"WARNING"

1. ALWAYS USE APPROVED EYE PROTECTION WHEN OPERATING THIS TOOL.
2. ALWAYS USE IMPACT SOCKETS IN GOOD CONDITION. SOCKETS IN BAD CONDITION REDUCE IMPACT POWER AND COULD ALSO SHATTER AND CAUSE POSSIBLE PERSONAL INJURY. NEVER USE HAND SOCKETS.
3. ALWAYS USE THE SIMPLEST HOOKUP POSSIBLE. LONG, SPRINGY EXTENSION BARS ABSORB IMPACT AND COULD BREAK LOOSE AND CAUSE POSSIBLE PERSONAL INJURY.
4. ALWAYS DIRECT EXHAUST AWAY FROM YOURSELF AND OTHERS IN THE AREA.
5. ALWAYS DISCONNECT TOOL WHEN NOT IN USE.

LUBRICATION

To flush out gum and dirt :

1. Daily before and after each shift, pour a liberal quantity of gum solvent oil into air line.
2. Connect tool to air line. Operate tool.
3. Repeat procedure before storing.
4. Monthly, check grease in impact unit.

AIR SUPPLY

1. Supply tool with 0.6MPa of clean, dry air. Higher pressure drastically reduces tool life and can void warranty
2. See diagram above for Pipe, Hose and Fitting size.
3. When using two or more hoses, Air Hoses should be larger than Leader Hose.

LOSS OF POWER/ERRATIC ACTION (possible causes)

1. Reduced compressor output.
2. Excessive drain on air line.
3. Moisture or restricted pipe, hose or fittings.
4. Improper size or poor condition of pipe, hose or fittings
5. Dirt or gum deposits cut tool power. To correct this, check and clean air strainer, then repeat lubrication procedure. (If outside conditions are in order, disassemble tool, replace worn or damaged parts, clean, assemble and lubricate.)

REPLACEMENT PARTS

Always use GENUINE TOKU TOOLS Replacement Parts.
 When replacement parts are required, order by Part No. and Description in the Parts List.

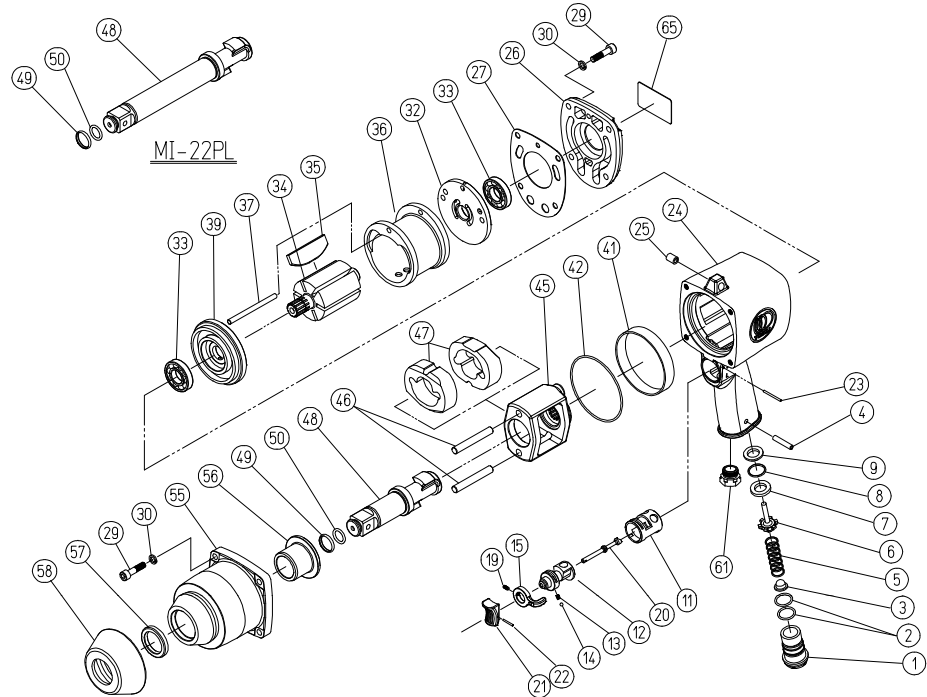
SOUND LEVEL

Sound Level dB(A) in accordance with ISO 15744 : Pressure 95
 Power 106

VIBRATIONS LEVEL

Vibration m/s² in accordance with ISO 8662-7 : 5.1

EXPLODED VIEW



Parts List

No.	Parts No.	Q'ty Req.	Description	Index No.	Parts No.	Q'ty Req.	Description
1	43-14-38-060	1	Air Inlet (PT)	32	43-19-05-370	1	Rear End Plate
2	13-11-17-017	2	O-Ring (AS568-017)	33	13-01-20-005	2	Bearing (EE-5)
3	13-68-03-049	1	Air Screen	34	43-19-05-390	1	Rotor
4	13-06-20-058	1	Spring Pin (3/16 X 25.4)	35	13-71-10-013	6	Vane
5	13-08-03-181	1	Throttle Valve Spring	36	43-19-05-360	1	Liner
6	43-13-94-080	1	Throttle Valve	37	43-19-05-A70	1	Liner Pin
7	13-68-04-007	1	Throttle Valve Seat	39	43-19-05-380	1	Front End Plate
8	13-11-03-015	1	O-Ring (S-18)	41	43-18-96-930	1	Housing Adaptor Ring
9	43-13-95-D80	1	Throttle Valve Spacer	42	13-11-17-040	1	O-Ring (AS568-040)
				45	43-18-96-440	1	Hammer Frame
11	43-18-96-201	1	Reverse Valve Bushing	46	43-18-96-460	2	Hammer Pin
12	43-19-05-210	1	Reverse Valve	47	43-18-96-450	2	Hammer
13	13-08-09-005	1	Spring 3 x 4(0.4)	48	43-18-96-500	1	Anvil Shank
14	13-05-02-008	1	Steel Ball (1/8)	49	13-08-03-113	1	Socket Retainer
15	43-19-05-230	1	Reverse Valve Lever	50	13-11-01-013	1	O-Ring (P-12.5)
				55	43-18-96-520	1	Clutch Housing
19	13-22-03-006	1	Hex Socket Seat Screw (M3 x 6)	56	43-18-96-490	1	Shank Bushing
20	43-18-96-100	1	Throttle Push Pin	57	13-12-02-030	1	Oil Seal (VB25355)
21	13-67-03-060	1	Trigger	58	13-62-01-018	1	Nose Shield
22	13-06-01-134	1	Spring Pin (1.6 X 14)	61	43-18-96-051	1	Exhaust Deflector
23	13-04-06-022	1	Pin (2 X 25)	65	13-73-05-097	1	Name Plate
24	43-18-96-011	1	Motor Housing				
25	13-06-08-010	1	Spring Pin (8 X 10)		43-18-96-50C	(1CP)	Anvil Shank S CP(Incl. Index No.48,49&50)
26	43-18-96-350	1	Housing Cover		43-18-96-52C	(1CP)	Clutch Housing CP(Incl. Index No.55,56&57)
27	13-62-02-049	1	Housing Cover Packing	MI-22PL			
				48	43-19-01-500	1	Anvil Shank L
29	13-17-06-025	8	Hex Socket Head Cap Screw(M6 x 25)	49	13-08-03-113	1	Socket Retainer
30	13-13-11-016	8	Spring Washer (1/4)	50	13-11-01-013	1	O-Ring (P-12.5)
					43-19-01-50C	(1CP)	Anvil Shank L CP(Incl. Index No.48,49&50)